

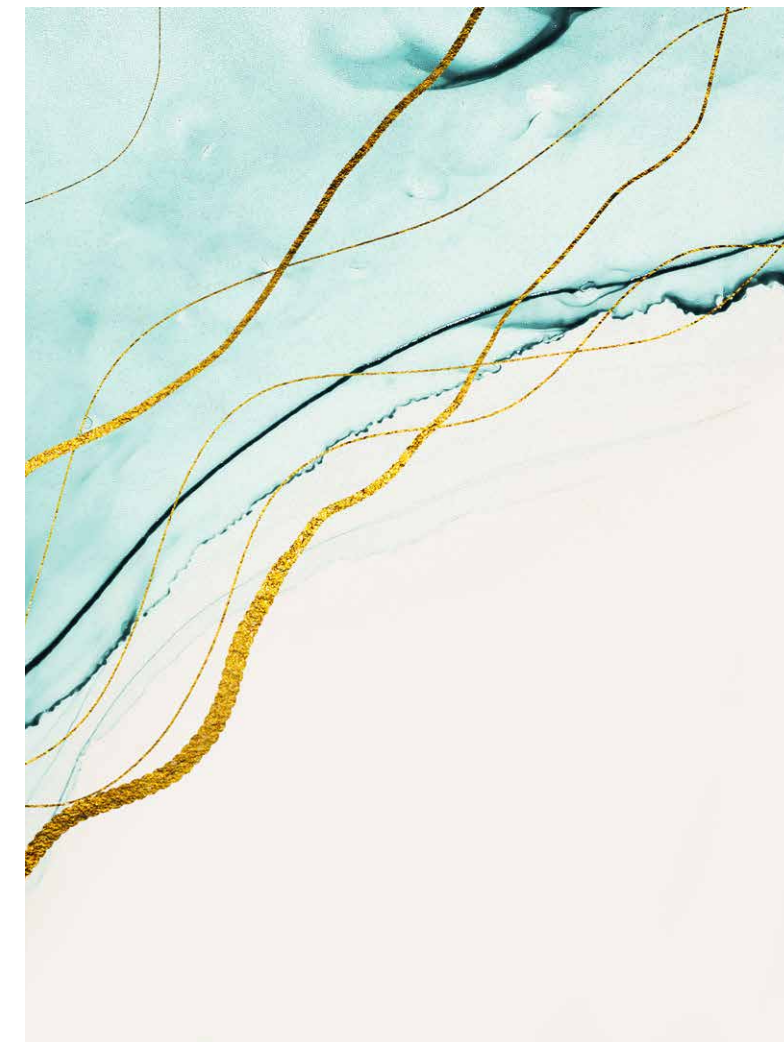
Luxury
crafted
in Verona.



ZB

Bruno Zampa

**The essence of the future
glows with reflected light
in movements of abstract elegance.**



Eternal traces

Luxury Villa in Saint Petersburg

ESSENCE

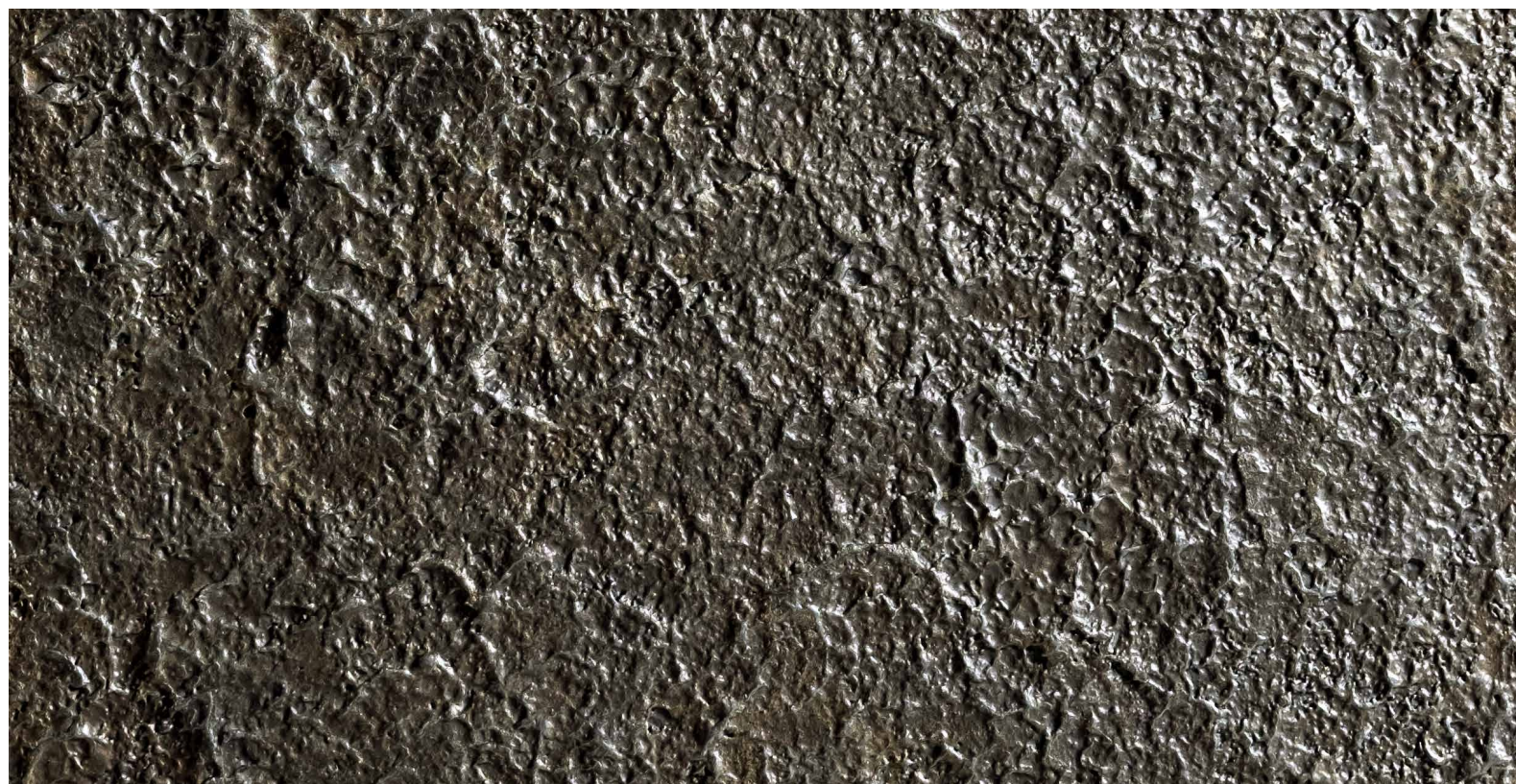
"The essence of the future"

The lifeblood of a future that is no more runs strongly through metal, generating the real living space.

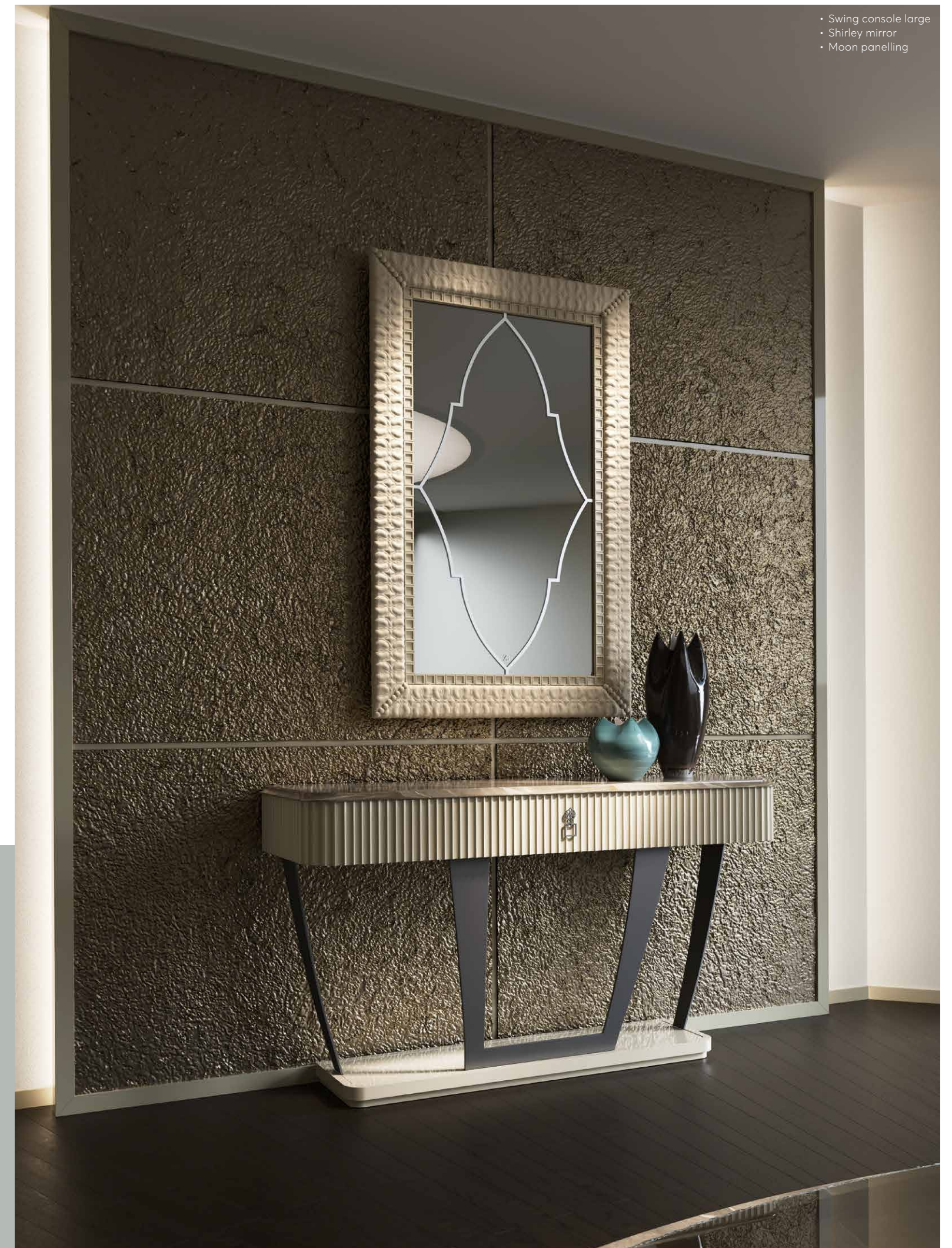


Future, light and movement are the mainstays of a project inspired by the artistic lines and concepts of the 20th century avant-garde, designing a spirit of innovation in the Bruno Zampa brand, which “looks to the future”, towards a new way of expressing products and architecture. Set amidst nature, just outside Saint Petersburg, the villa is characterised by outstanding dynamics, enhanced in architectural terms by different levels, large spaces, more secluded areas, vertical extensions and variable lighting effects. The idea stems from the geometric lines of the Russian Suprematist artistic movement, developing and evolving into richer, more detailed compositions. The interiors are characterised by different decorative motives, which offset one another in some ways: some being more linear and abstract, while others are much more natural and

palpable, chasing each other around the walls, on the details of the decor and on the free-standing furnishings. Masterfully shaped metal is the material that prevails, creating the whole, which, in the nuances of gold and titanium, decorates and perfects, generating surprising tactile effects and sensations of three-dimensional depth. As a bearer of unprecedented movement, light plays an essential role: on one hand, it highlights furnishing elements with plain and elegant colours, and on the other, it intersects with the brilliance of metals, which are bathed in a new reflection, every time new, every time different. From the moment they walk through the threshold of the villa, guests undergo a surprising sensory experience, expressed strongly by the combination of numerous contrasts: dry and humid, warm and cold, light and dark, geometry and nature.

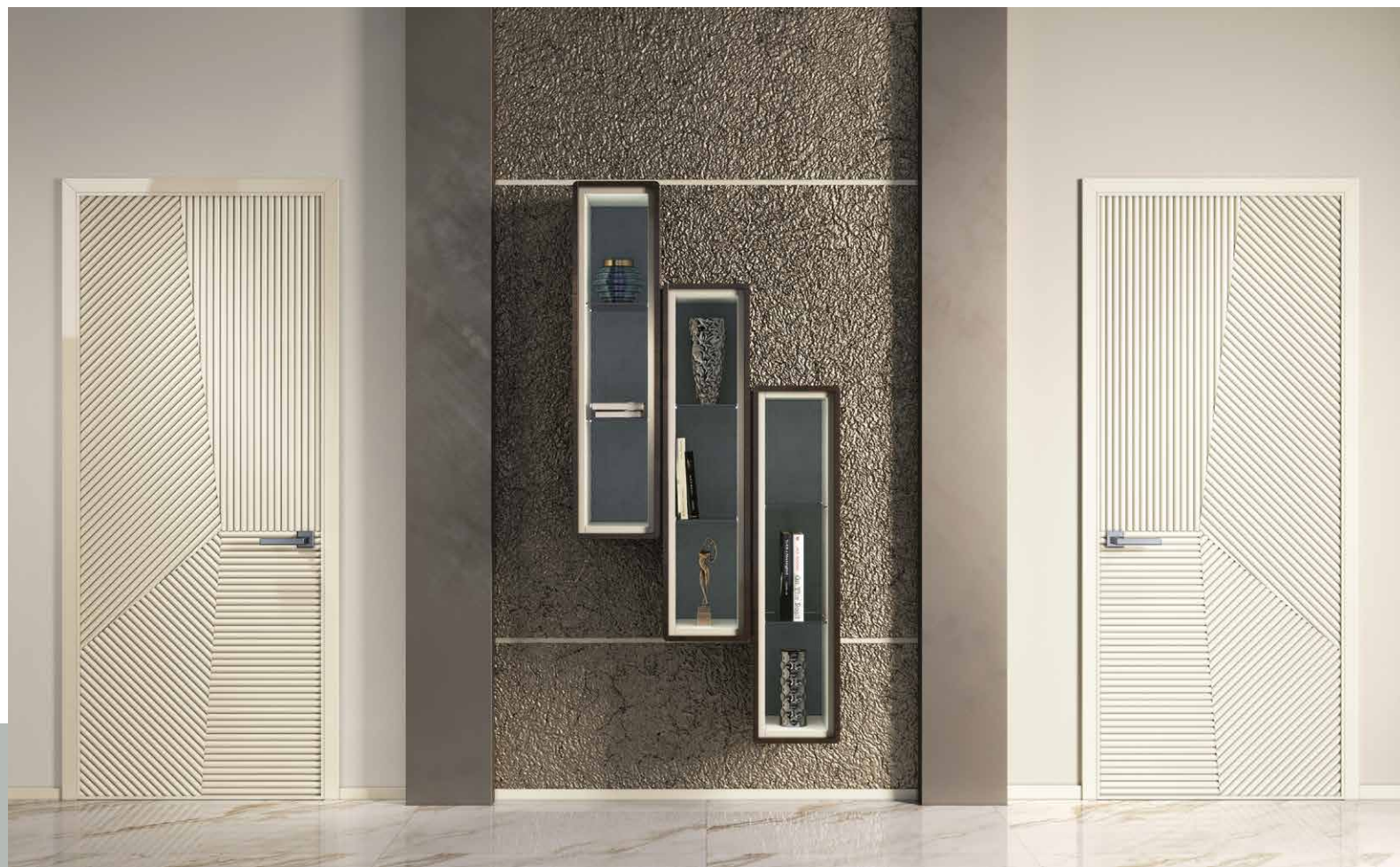


Water trickles over the amber-coloured leaves of the Malevich titanium nature decoration, offering a seductive and poetic welcome. On the opposite side, the console and entrance mirror, featuring light finishes, rest on the Moon decoration, the metallic texture of which characterises the wall with personality, in a perfect balance of delicacy and strength.



- Swing console large
- Shirley mirror
- Moon panelling





- Dedalo composition
- Moon panelling
- Millerighe door
- Twin standing lamp
- Twin chandelier

A living area featuring elements with soft lines and harmonious proportions, reinterpreted in an innovative and contemporary key, as a combination of taste and creativity. Metallic details flow over the impalpable shades of the leather and stains of colour, in an ethereal atmosphere which comes to life when illuminated.

A game of geometries characterises the wall with metallic columns that distinguish the Moon decoration in the central part, with the Dedalo composition and Millerighe doors.





• Wave sofa 3 seats
• Vertigo rug



The living area overlooks the Nordic natural landscape, through a splendid glass wall. The modern design of the Wave sofa is matched with the rounded lines of the Emperor sofa and the Marylou armchair, with its elegant button-quilted back. The sitting area is completed by the arrangement of Oliver tables, in the central version, with the Malevich titanium nature decoration on the top.

- Emperor sofa 4 seats
- Oliver central table
- Oliver side table
- Twin table lamp



- Fiorile tv cabinet
- Marylou armchair
- Belle pouf
- Dea twin set

The television is recessed into a luxurious marble wall, richly decorated with shading and highlights, almost as though it is floating on the surface. Suffused lights bathe the coordinated furnishing elements.

Reflections

"glows with reflected light"

Bathed in reflected light,
even a cold wall warms up,
enhancing its forms.

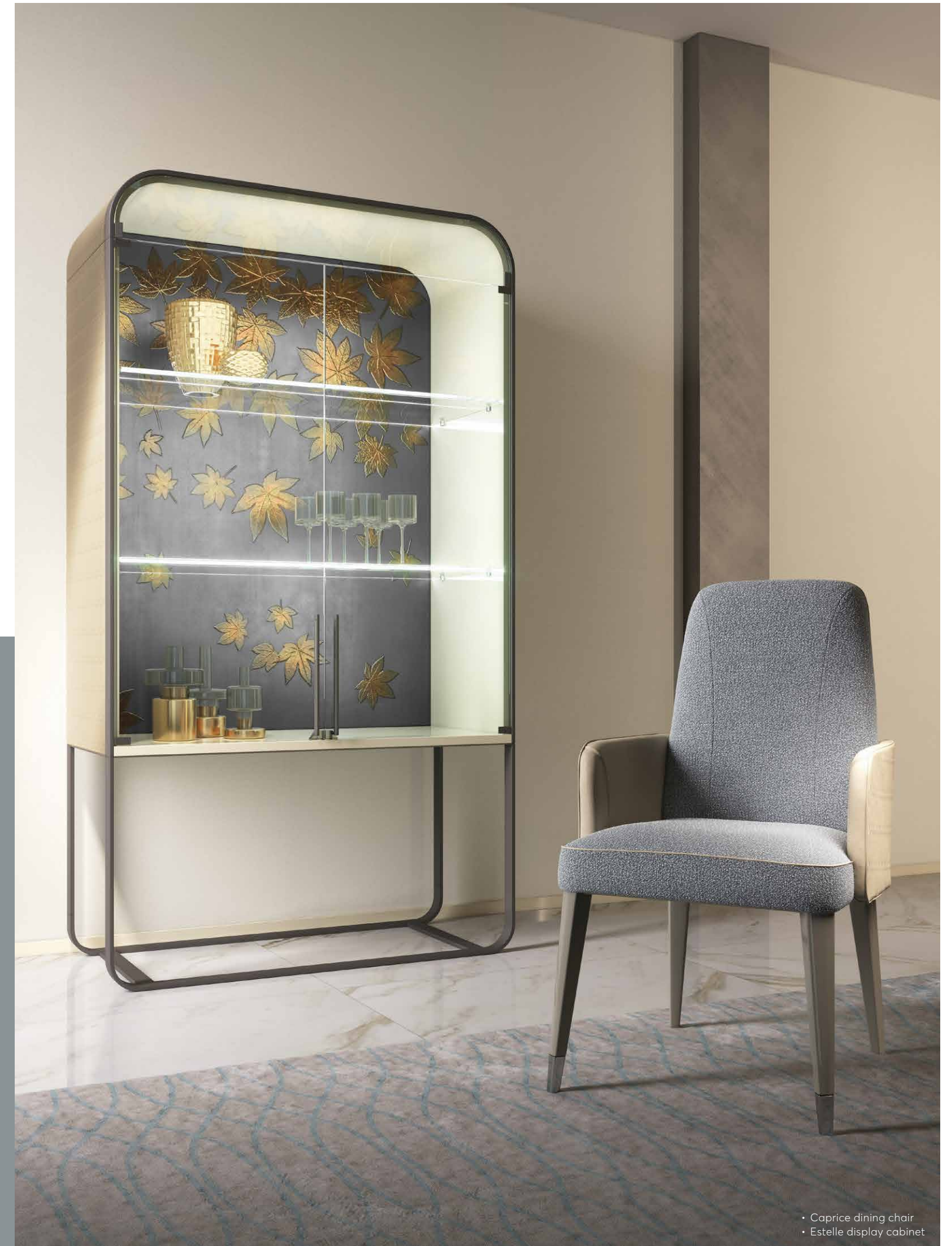




The Malevich nature decoration is created using special metal alloys, hand-moulded by our craftsmen, to reproduce natural beauty. The texture of the leaves, rich in veins and details, is embellished by golden dust brushed on to emphasise every tiny detail. In the dining room, the fully decorated floor-ceiling panelling fills the room with the seductive atmosphere of autumnal foliage.



The natural motif also decorates the product, enhancing its design. As in the case of the Estelle display cabinet, the light and modern lines of which are traced by a fine metal profile. Crystal shelves illuminate the decoration applied on the back, making it shimmer with a unique and precious touch.



• Caprice dining chair
• Estelle display cabinet



- Petrus rectangular dining table
- Twin rectangular chandelier
- Petrus rug

In the dining room, the Petrus table, with the warm and enveloping colours of Wengé wood and bronze-coloured marble, is matched with elegant Caprice chairs. The prestige of the materials and exclusive details are enhanced by a cascade of light from the Twin chandeliers.



Water is, if not life itself, the living element par excellence. This is the consideration that fuelled our client's desire to see it running through the entrance, almost as though to celebrate the arrival of every new guest. And if water represented the thought... droplets represent the action: the tangible expression of a specific need for transparency and purity, capable of infiltrating every space, starting with an entrance that is almost a portal, caressed by the vivid sensation of gentle autumn rain.

With every hello and every goodbye.







- Ariel armchair
- New line side table
- Etienne mirror



- Cleo bed
- Elypse bedside table
- Adam bench
- Twin suspension lamp
- Malevich gold kenzia panelling

Leather, skilfully quilted with patterns and textures, characterises the sleeping area and accompanies the golden nuances of the metallic details. Behind the sophisticated lines of the Cleo bed, the Malavich gold kenzia decoration moulds the sinuous curved fronds, sustained by long stems, of the natural element.

- Harmony sofa 3 seats
- New line rectangular central table



The dense and saturated colours of the Harmony sofa in soft chocolate velvet harmoniously and warmly enhance the sitting area, creating continuity with the wengé essence of the New Line tables with decorated top.

- Duca tv cabinet
- Mademoiselle dressing table
- Mademoiselle chair



Balance and attention to detail, for a light and contemporary elegance. The Millerighe wall panelling defines the setting with just the right touch of character, without becoming heavy. Plain but luxurious furnishings perfect every perspective.

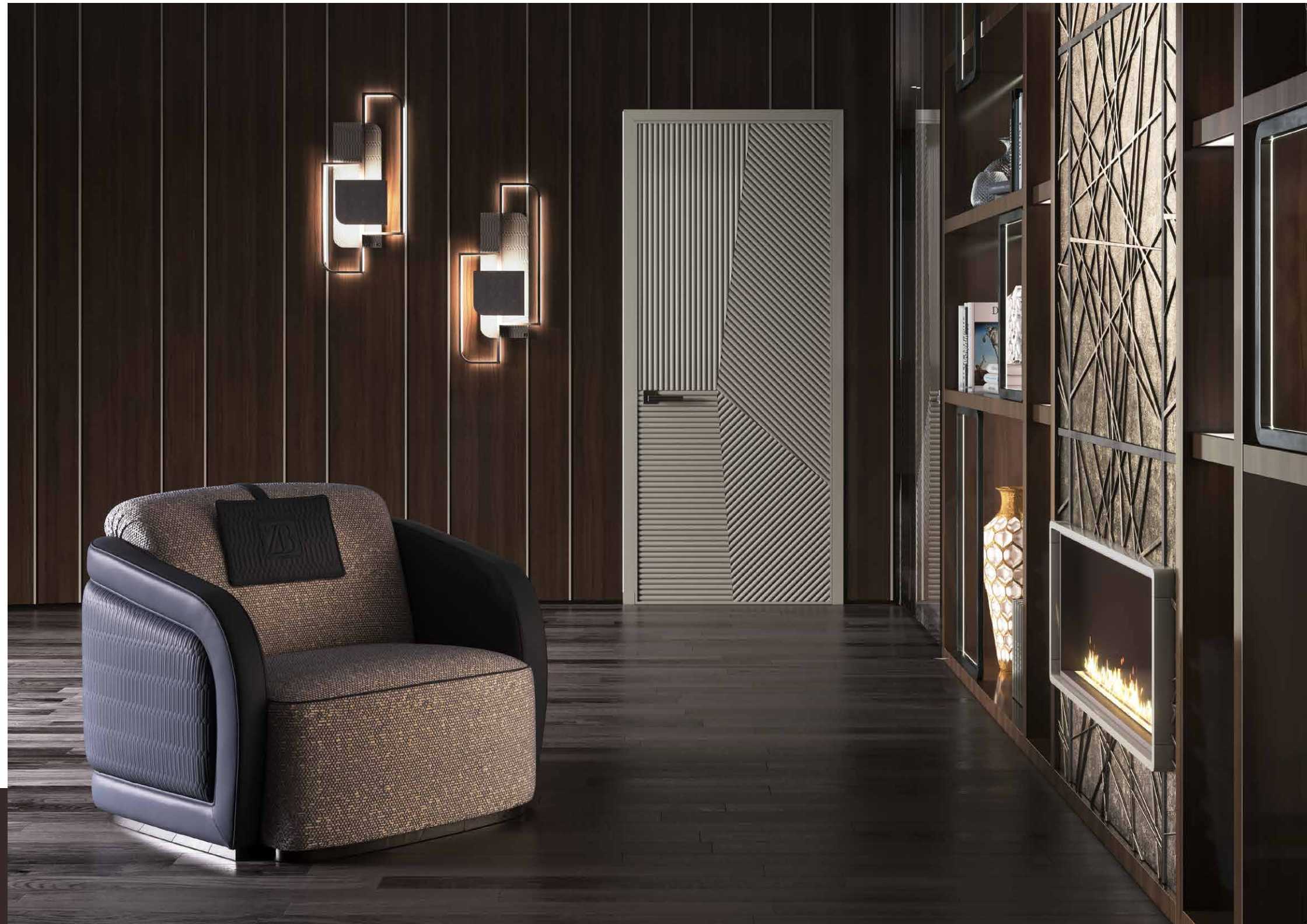
BRILLIANNO

"in movements of abstract elegance"

Contrast can generate harmony
when the neutrality of colour
merges with the luxury of shine.



- Ipazia armchair
- Tulip round table
- Astoria rug



- Dafne bookshelf
- Astoria wall lamp
- Millerighe door

Elegance and light are the two special features of the office, creating an intimate, formal atmosphere. In the sophisticated design of the bookcase, with fireplace and shelves, made to measure, the lighting study has been conceived to enhance the light and shade of the decorations, making the most of the nuances and shimmer. Functional yet comfortable seats are upholstered in soft shades and enriched with brilliant details.





- Astoria desk
- Astoria table lamp
- Dedalo composition

Natural leather softens the marked shades of the wood used for the wall panelling and floor. The Astoria executive desk, enriched at the sides with the Malevich titanium geometric decoration, elegantly imposes its forms.

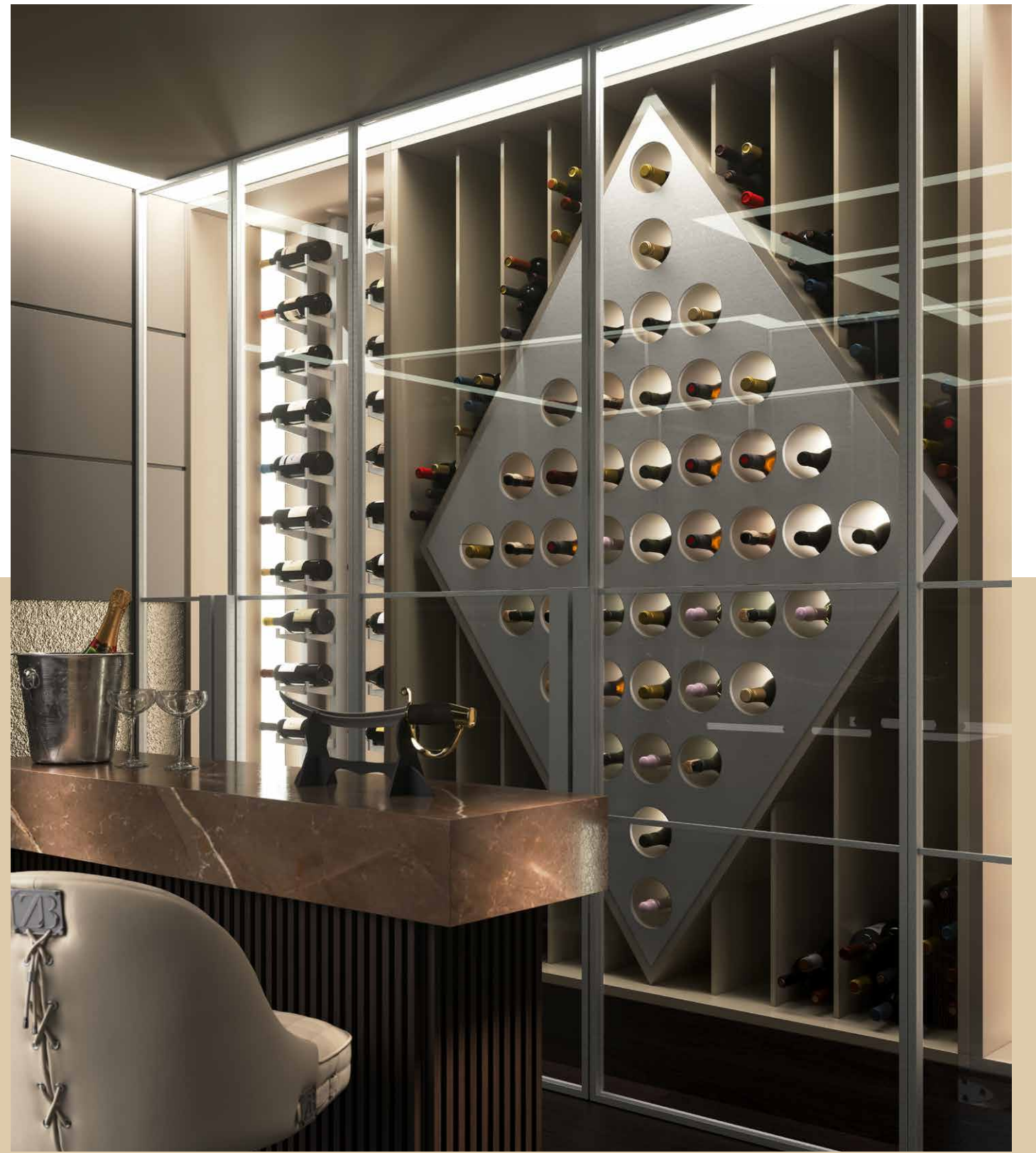


- Comet office chair
- Comet front desk chair
- Twin standing lamp



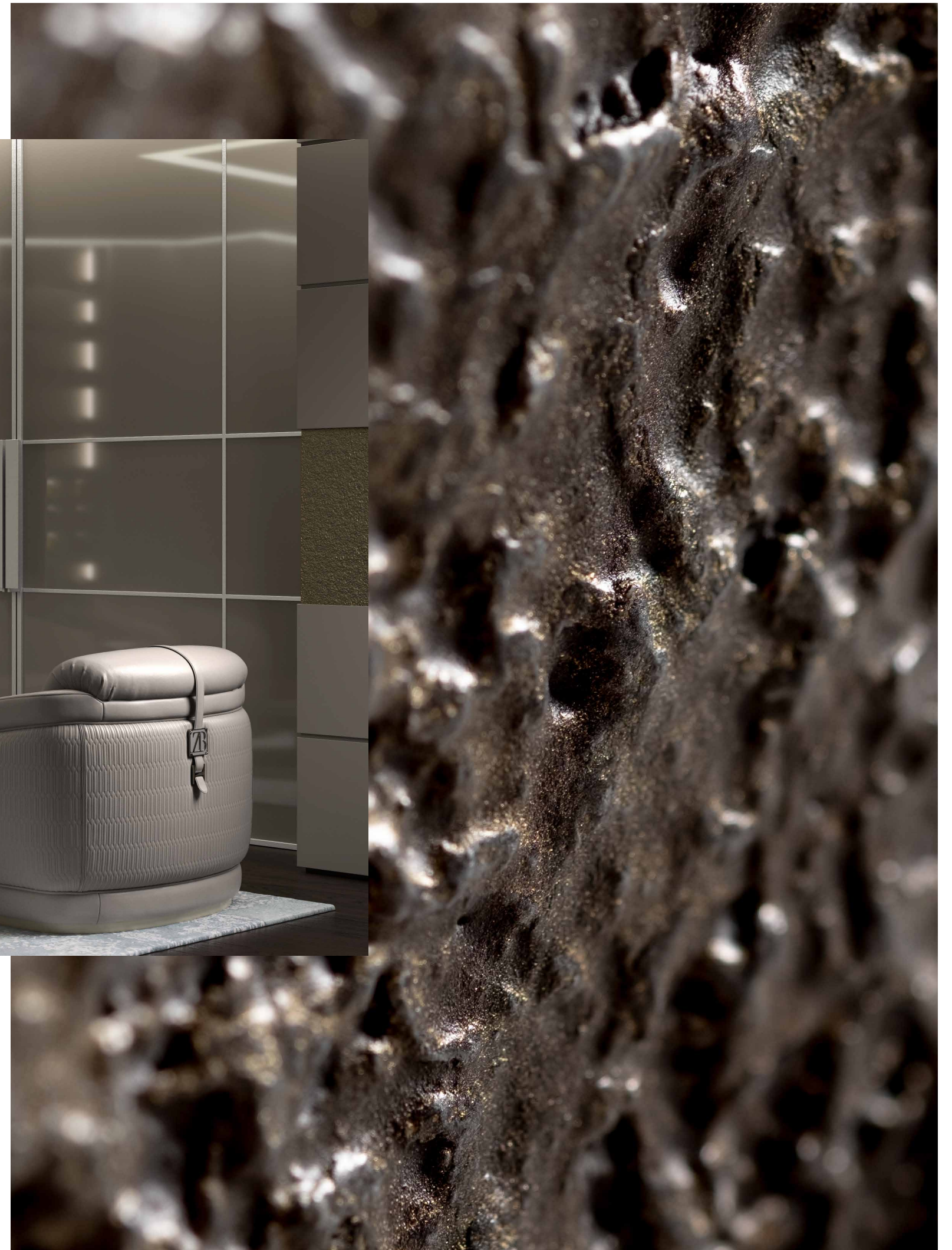


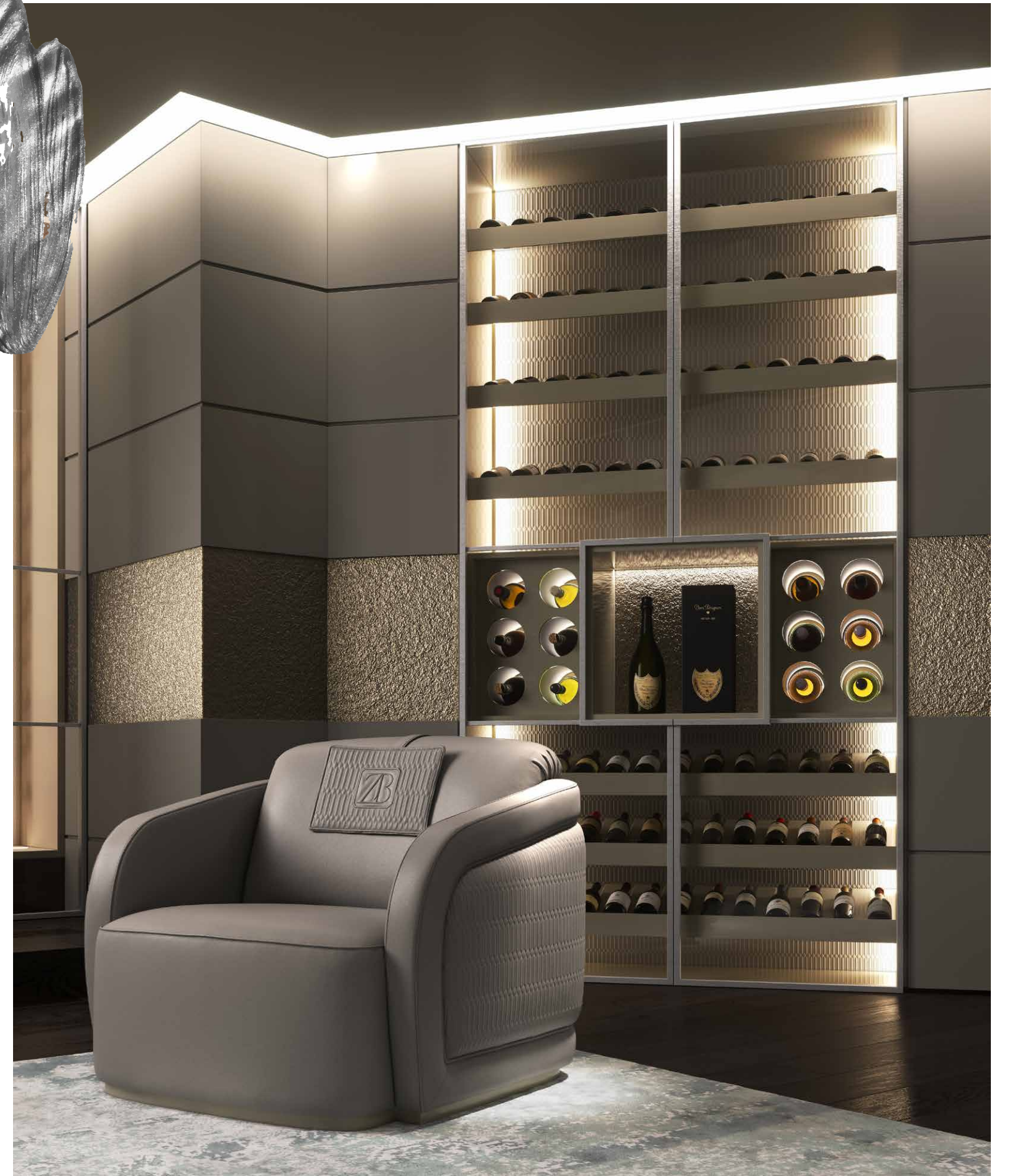
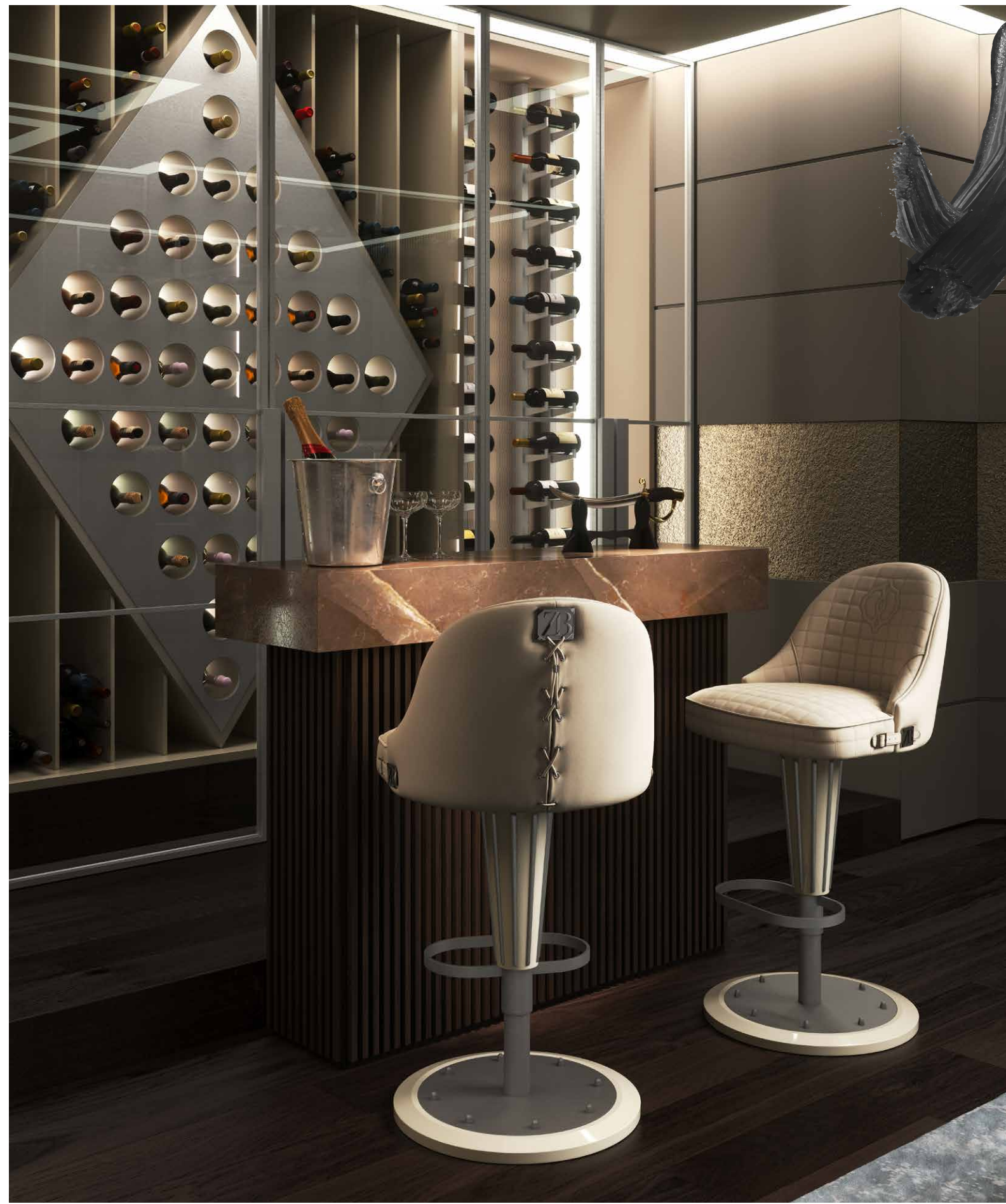
- Oliver central table
- Stan courtesy table
- Vertigo rug





A room that conveys value to its passions, where tasting an excellent wine is a unique and unforgettable moment. The bottles are positioned dynamically in the temperature-controlled wine coolers, in compliance with storage requirements. Along the walls, between backlighting and transparencies, the Moon decoration surrounded and brings the central lounge area to life, rewarded every single one of the sense.





• Ipazia armchair
• Ophelia bar stool



Project's figures

13

different metallic
processes

9

shades of metallic dust
applied by hand

4

inspirational natural
elements

49

decorated panels
applied to the walls

27

craftsmen involved

51

days' assembly work





Bruno Zampa Srl

Via Crosaron, 23
37053 Cerea
Verona – Italy

Verona Gallery

Via Calcara, 68/70
37053 Cerea
Verona – Italy

brunozampa.it

info@brunozampa.it